

S 36 X DirectDrive Truck-mounted concrete pump

Technical data

Performance

Pump kit		P2023-110/75	P2023-110/75	P2023-110/75	P2025-120/80	P2025-120/80
Drive	l/min	380	535	636	535	636
Delivery cylinders	mm	230 x 2,000	230 x 2,000	230 x 2,000	250 x 2,000	250 x 2,000
Concrete output max.	m ³ /h	98	136	161	136	161
Pressure on concrete max.	bar	85	85	85	85	85
Stroke rate max.	1/min.	20	27	32	23	27
Concrete valve		M-ROCK (Option: B-ROCK)	M-ROCK (Option: B-ROCK)	M-ROCK (Option: B-ROCK)	B-ROCK	B-ROCK

Hydraulic system

Design open system

Hydraulic tank l 385

Boom 36 DirectDrive

Delivery line DN 125

Length of end hose m 3.50 (Option: 1.00 + 2.50)

Vertical reach m 35.10

Reach depth m 22.65

Horizontal reach m 31.10

Net horizontal reach m 28.60* (from front bumper)

Number of boom sections 4

Height of the inflexion points m 3.99 / 12.39 / 19.95 / 27.45

Slewing range 2 x 365°

Folding height m 8.32

Support

Outrigger width, front m 6.21

Outrigger width, rear m 5.70

Outrigger load, front kN 190

Outrigger load, rear kN 150

Chassis (examples**) Mercedes-Benz Arocs 2740 MAN TGS 26.360

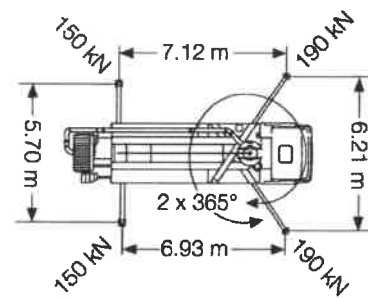
Axles configuration 6x4 6x4

Wheelbase 4,200 4,200

Length 11,200 11,235

Miscellaneous

Water tank l 420



*depending on the chassis **other chassis possible