

# EASy and EASyflex

The outrigger systems EASy and EASyflex extend the range of applications of the S 43 SX III. With EASy, the concrete pump can be safely supported on one side, if required. Thereby covering a working range of 135°. EASyflex provides further outrigger combinations and as such, more flexibility on the jobsite. In this way, pump applications can be achieved with the maximum working safety even in difficult, restricted spaces. More flexibility for more safety.

**EASy**  
**EASyflex**

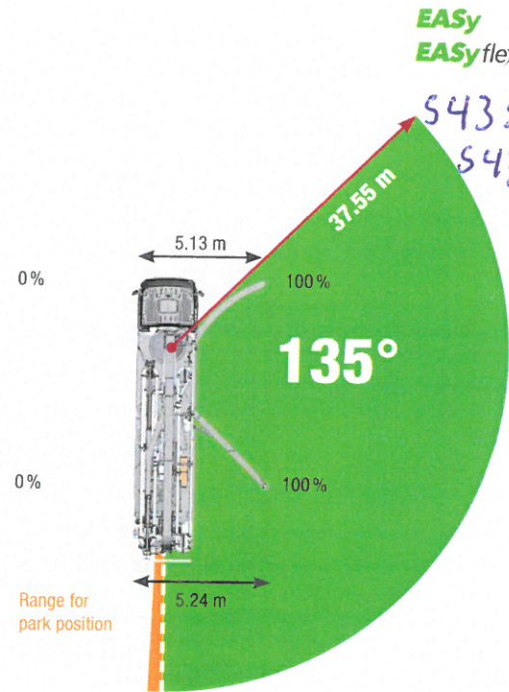
43 meter

S 43 SX III Intern nr 486  
S 43 SX II Intern nr 499

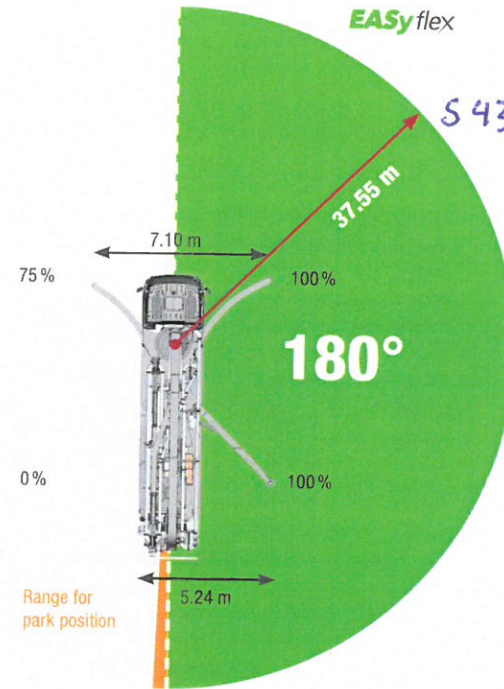
## Working range

S 43 SX II er 35 cm bredere på støtteben

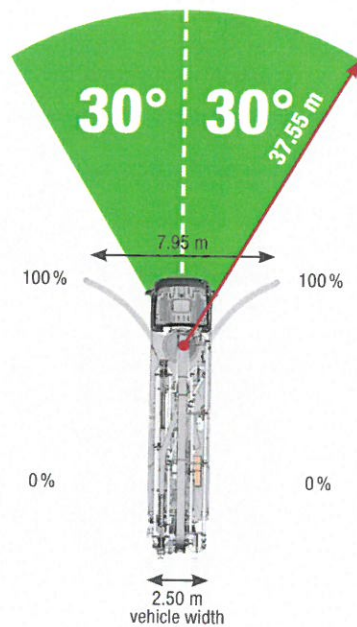
EASy



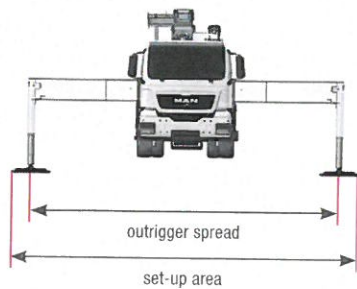
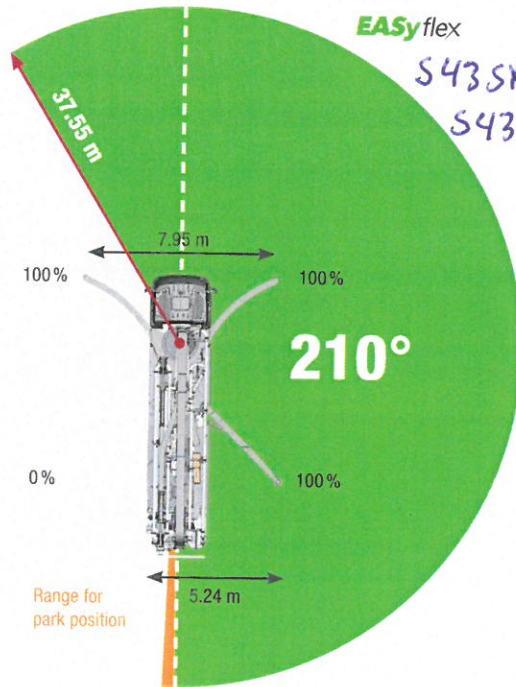
EASyExtend



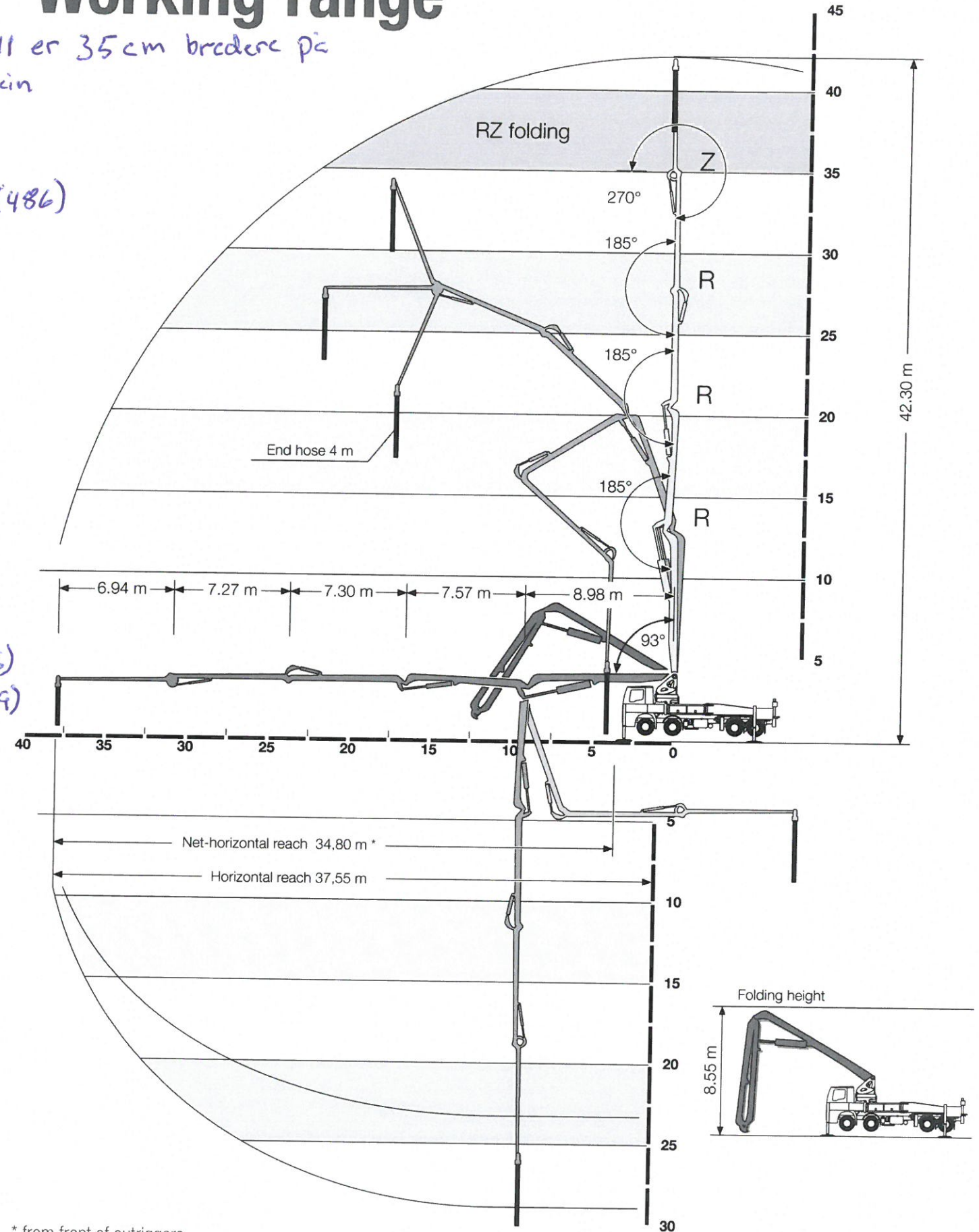
EASyFront



EASy with EASyFront



The outrigger spreads as specified are measured from the centre of the outrigger leg. Any cribbing or underlay timbers must be taken into account when determining the required set-up area.



\* from front of outriggers